



RegTrack-SDD

An On-Premise product for listed entities to stay on top of Insider Trading Regulations

SDD for UPSI

Unpublished Price Sensitive Information (UPSI)

UPSI means any information related to the Company, which if published is likely to materially affect the price of securities of the company. UPSI contains but is not limited to financial results, intended declaration of Dividends, Issue / buy back of securities, major expansion plans, etc.



Structured Digital Database (SDD)

SDD means the database maintained by the Company containing the names of such persons or entities with whom Unpublished Price Sensitive Information (UPSI) is shared









Regulation 3(5) of SEBI (Prohibition of Insider Trading) Regulations

The Board of Directors shall ensure that the Company maintains SDD containing details of the nature of UPSI and the names of such persons who have shared the information and the names of the person with whom the information is shared along with the PAN or any other identifier authorized by law.

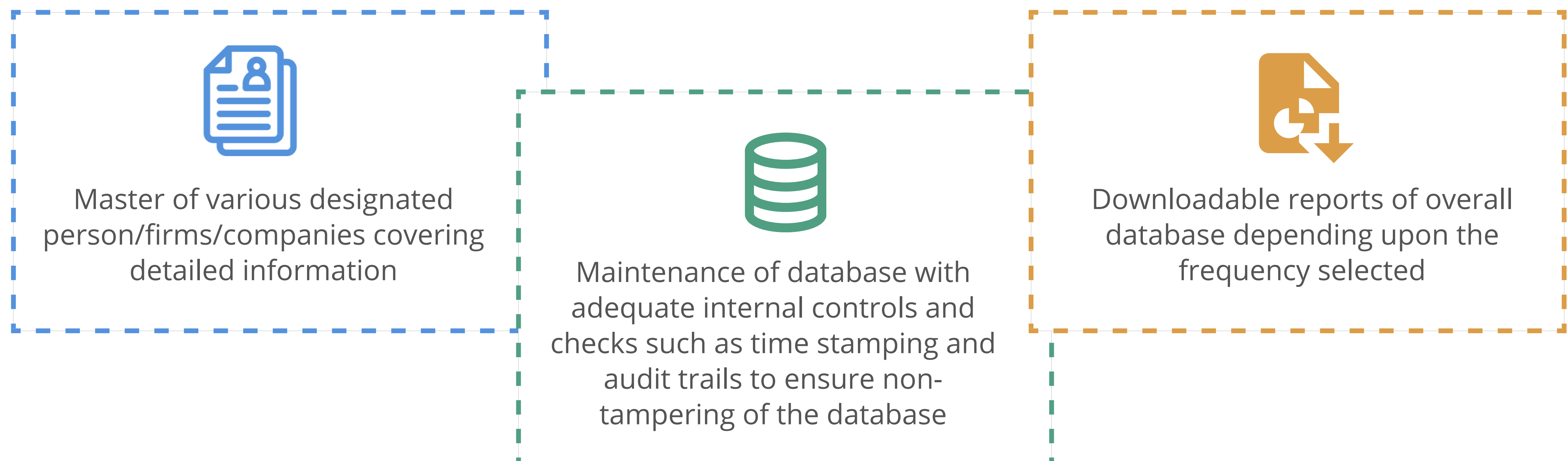


RegTrack-SDD platform by TeamLease RegTech

An on premise product for listed entities to stay on top of Insider Trading Regulation

	SDD requirements by SEBI	RegTrack-SDD by TeamLease RegTech
 Time Stamping	✓	✓
 On-premises Hosting Information maintained internally)	✓	✓
 Non-Tampering of Data	✓	✓
 Audit Trail	✓	✓
 Maintenance of Historical Data	✓	✓
 Masters (DP, UPSI, Auditor, Company)	-	✓
 Customized Report generation	-	✓
 Easy to use	-	✓

A DIGITAL SYSTEM THAT IS BE DEPLOYED ON THE COMPANY 'S SERVER THAT CONTAINS

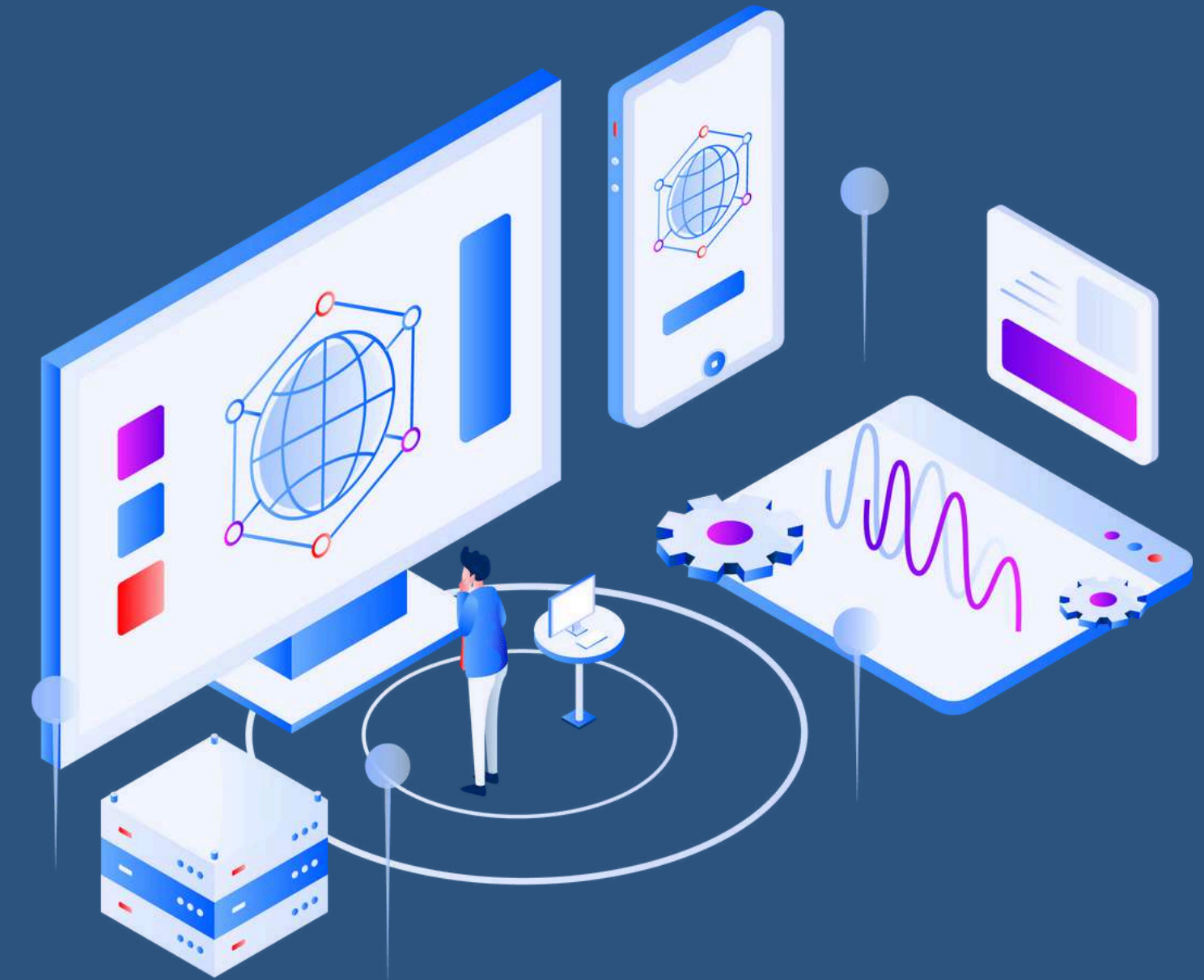


Infrastructure Requirement

Network Requirements



- IIS server Installed
- 80 For http traffic
- 443 For https traffic
- Static public/private IP address
- Optional domain name



Windows Server

- A Minimum Server/VM with 4 Core CPU and 4 or 8 GB RAM
- A Minimum of 2 drives, one with OS and one for backups
- Operating System - Windows Server 2019 R2 Standard Edition
- SQL server 2019 Express (at installation time, please keep the sa password)
- SQL Server Management Studio (SSMS)
- SMTP details with email and password (To generate system emails)

Linux Server



- RAM: 4GB
- Disk Size: 60GB
- OS: Ubuntu 18.04





CONTACT US

TeamLease RegTech Pvt. Ltd.

(Formerly - Avantis RegTech Pvt. Ltd.)

Office No. 312 & 313, Kakade Bizz Icon,
Shivajinagar, Pune, Maharashtra 411005.



Bangalore, Mumbai, Kolkata, Hyderabad, Delhi, Chennai, Ahmedabad



9899245318



sales@tlregtech.com



www.teamleaseregtech.com